

ELECTRONIC ROTARY GEAR MOTOR

Series AR ... E

The AR rotary gear motors are newly conceived and have been specially designed to be installed on industrial combustion systems. They are particularly suitable to control modulating valves, butterfly valves, ball valves, dampers and other devices for the regulation of fluids in air conditioning and heating systems. The electric motor is unipolar and bidirectional with high static and maintaining torque. Analogic input signal: current or voltage change or change in the resistance value of the potentiometer.



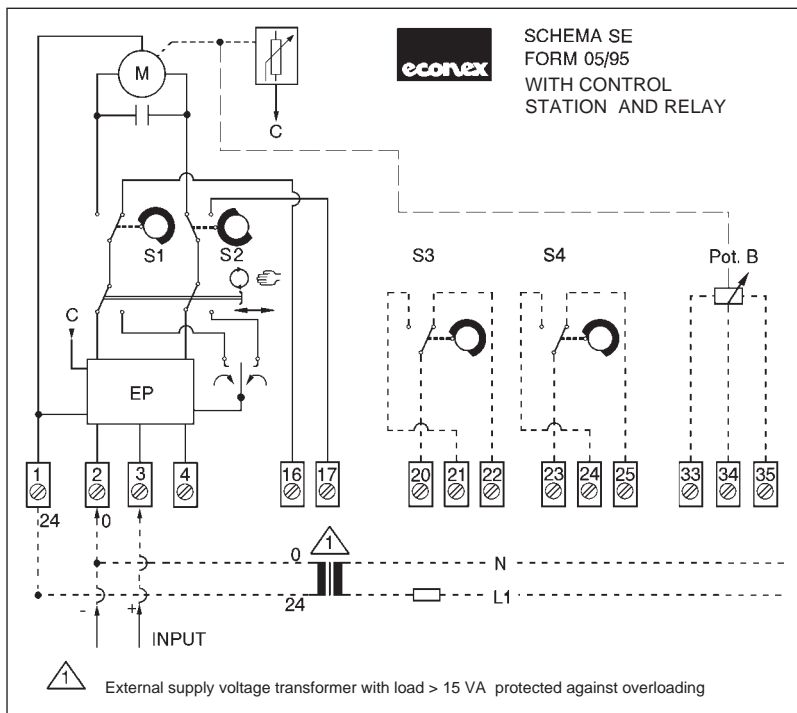
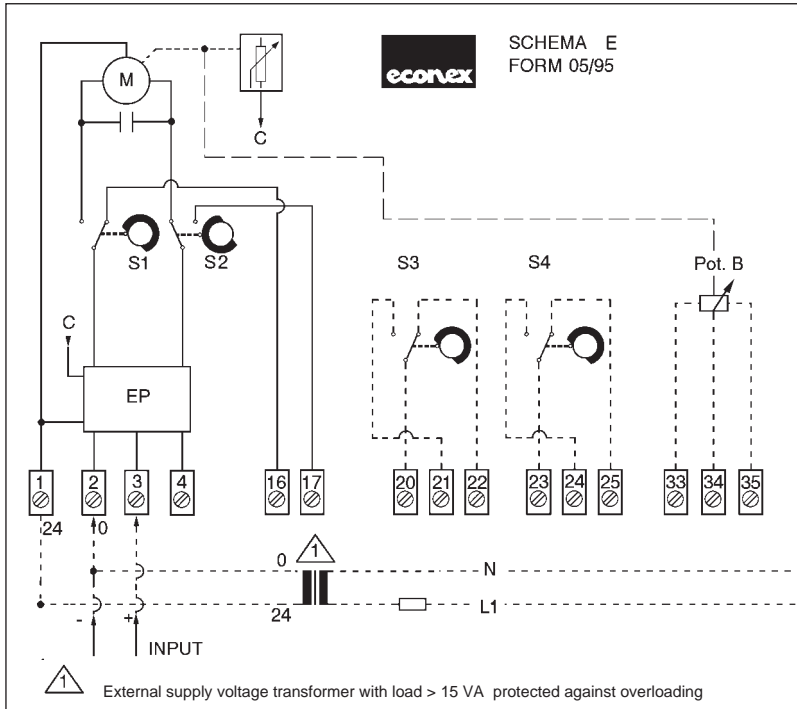
TECHNICAL FEATURES

Body and cover	: die-cast aluminium	Supply voltage	: 24 V A.C.
Nominal torque	: 15 - 20 Nm	Frequency	: 50/60 Hz
Maintaining torque	: 15 - 20 Nm	Nominal load	: 7 VA
Rotation time	: 30 - 60 seconds for 90° at 50Hz	Standard input signal on request	: 4 ÷ 20 mA 0 ÷ 20 mA 0 ÷ 10 V D.C. 0 ÷ 135 Ohm
Rotation angle	: adjustable 20° ÷ 180° (standard 90°)	Duty cycle	: continuous 100% ED
Output shaft	: □ 9,5 mm	Rating of end switches and auxiliary switches	: 5 (1) A/250V
Installation	: in any position	Enclosure on request	: IP 54 - IEC 529 : IP 65 - IEC 529
Ambient temperature	: -10 ÷ +60 °C	Cable gland	: 2 x Pg 13,5
Weight	: ~2,5 kg		

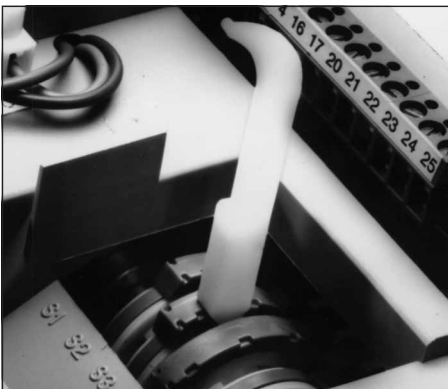
FEATURES

- Interchangeability with the most available gear motors.
- Sturdy, compact construction, suitable for industrial applications.
- Installation in any position.
- Mechanical position indicator.
- Cams easily adjustable through friction.
- Wide range of accessories on request:
 - output signal: 0 ÷ 10 Volt D.C.
 - manual/automatic operation and service switch "Open/Stop/Closed"
 - multipolar connector for electric wiring
 - auxiliary shaft 8 mm Ø or □9,5 mm (max. 3 Nm)
 - adjustable auxiliary microswitches (max. 2).

WIRING DIAGRAM



CAM ADJUSTMENT



For cam adjustment the proper lever supplied with the gear motor equipment is to be used. Use the lever from the right side, introducing the pin into one of the bores on the sides of the blue cam and lever it to the desired position.

If the blue cam is in a behind position, use the lever on its curved side to move the blue cam to a more suitable position to perform adjustment.

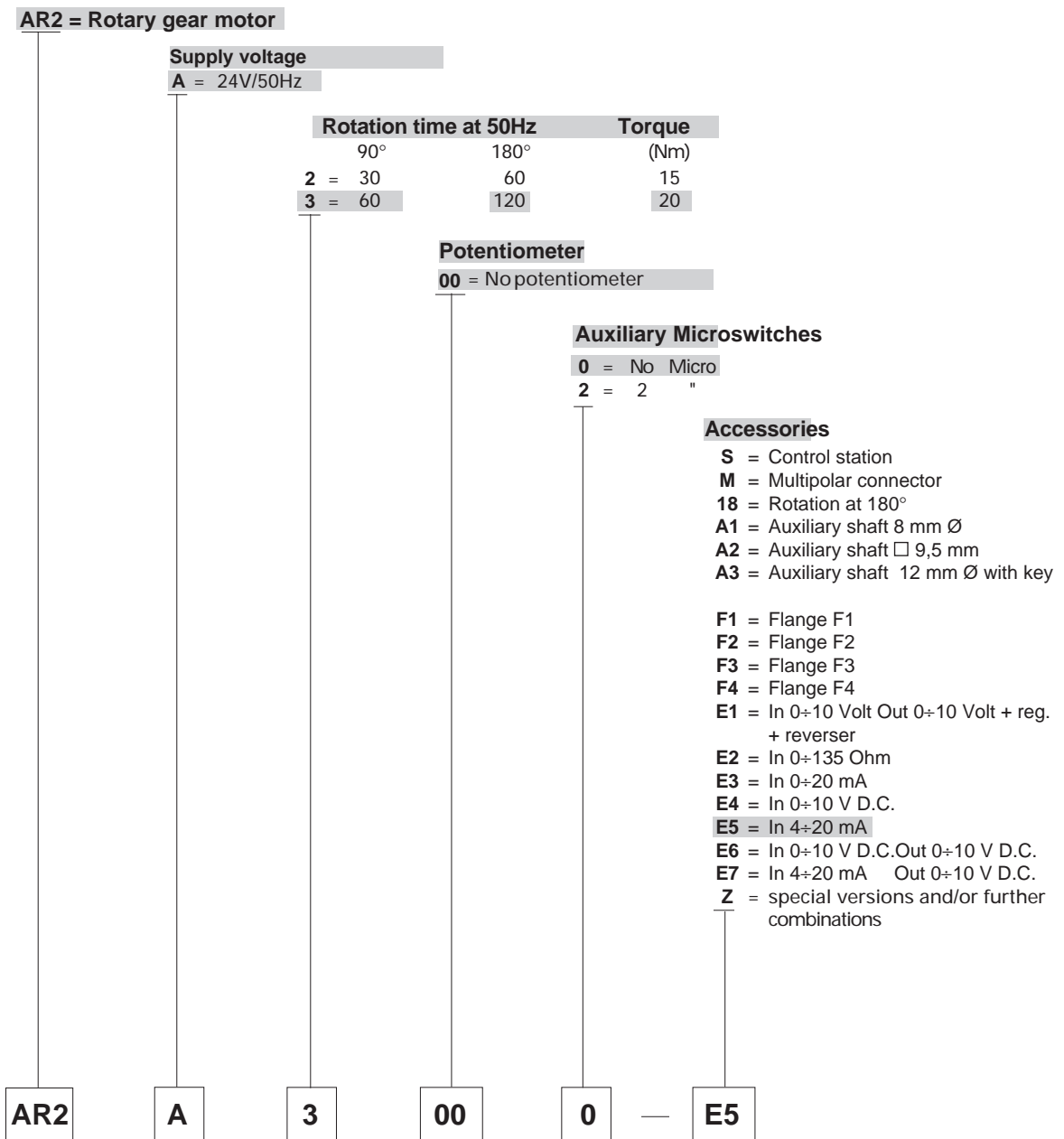
Adjustment is possible in both directions along the whole rotation angle of the cam shaft.

Remove the lever before servicing.

Note: it is necessary to re-adjust the friction gear of the potentiometer and to reset this latter.

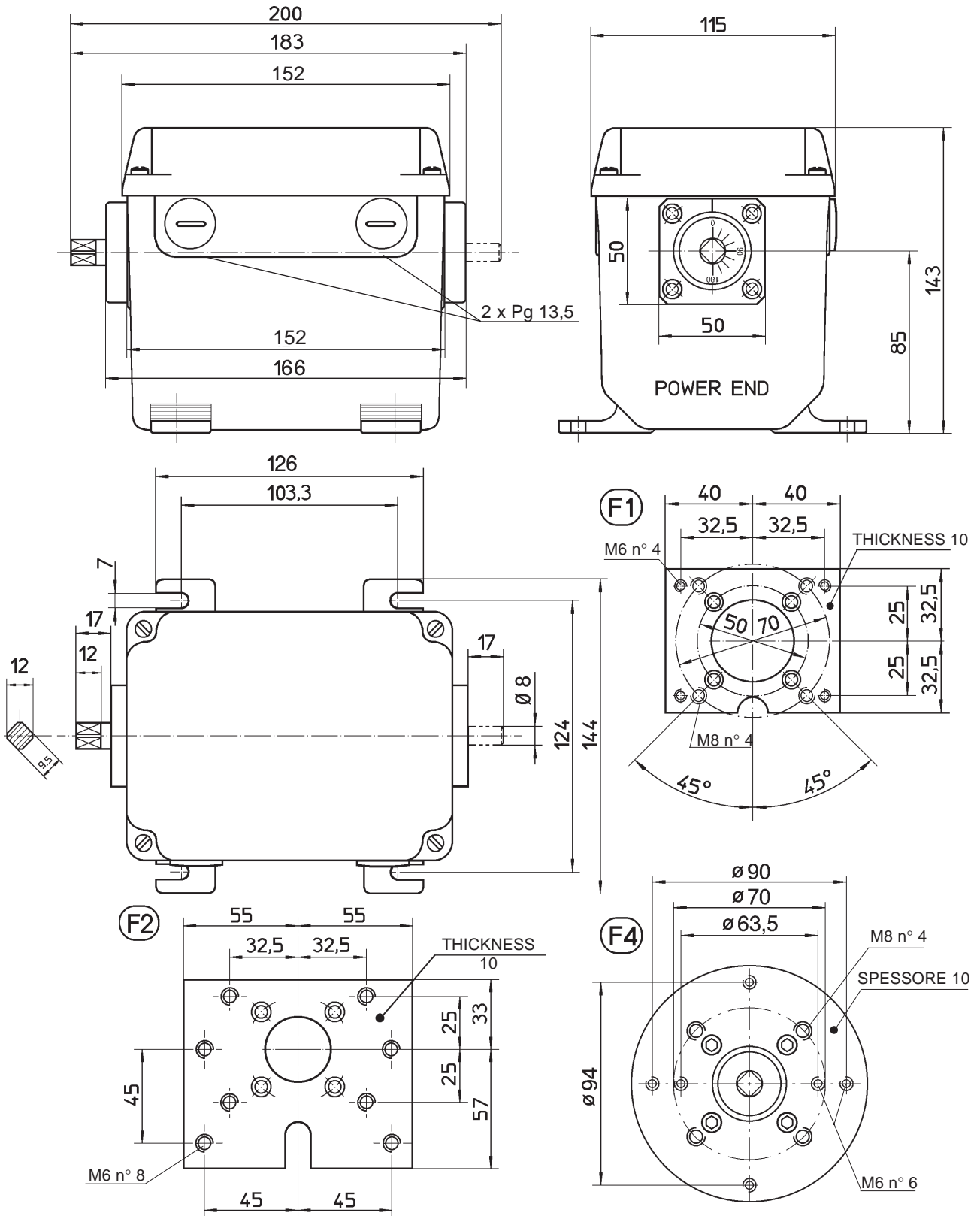
Model	Nominal and maintaining torque (Nm)	Rotation time for 90° (50 Hz)	Nominal load (VA)	Peso (kg)
AR2A3000	20	60	7	2,5
AR2A2000	15	30	7	2,5

HOW TO ORDER/CODE



Note: the max. torque on the auxiliary shaft is 3 Nm to be deducted from the nominal torque

INDICATIVE DIMENSIONS (mm)



All the reported data are subject to be changed without notice.

econex s.r.l.

Via F. De Sanctis, 53 - I - 20141 MILANO - Tel. +39 0289502912 - Fax. +39 028463084 - E-mail: econex@tin.it - www.econex.it

Form 010410